

Free Guide to the Smithsonian Museums

**Free!**

# MySmithsonian

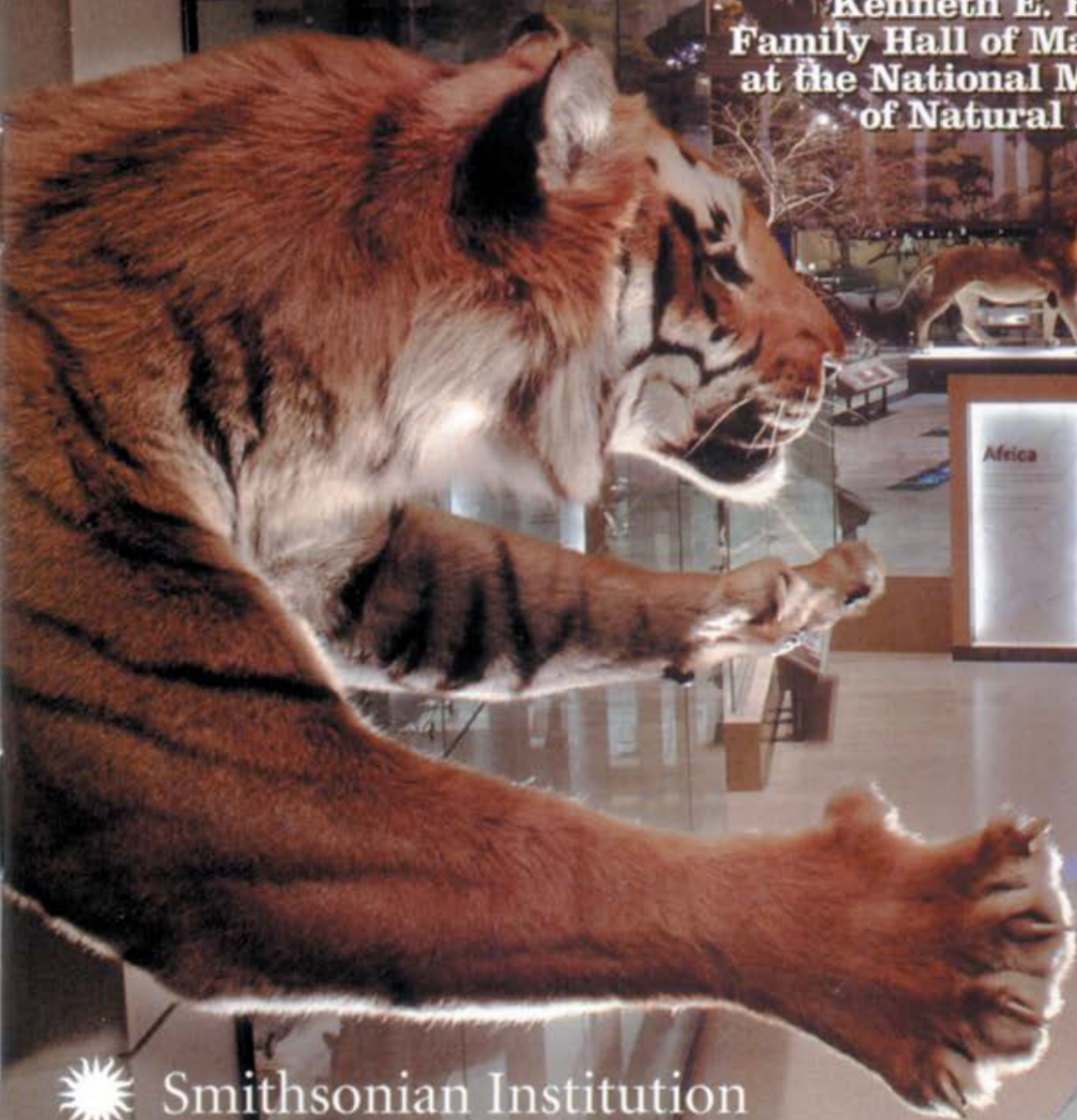
[www.smithsonian.org](http://www.smithsonian.org)

**New!** Opening Day  
November 11  
"The Price of Freedom"  
at American History

PAGE 30

## Where the Wild Things Are

Visit the new  
Kenneth E. Behring  
Family Hall of Mammals  
at the National Museum  
of Natural History



Smithsonian Institution

**MAPS  
& TIPS  
INSIDE**

- See the Hope Diamond up close
- Experience spider-mania in the Insect Zoo

## THE BASICS

**HOURS:** 10 a.m. to 5:30 p.m. every day except December 25.

**SUMMER HOURS:** May 27 to September 6, 10 a.m. to 7:30 p.m. daily.

**ADDRESS:** Constitution Avenue at 10th Street, NW (accessible entrance)

**WEB:** [www.mnh.si.edu](http://www.mnh.si.edu)

**METRO:** Smithsonian Station or Federal Triangle (Orange or Blue Line)

## ABOUT THE MUSEUM

The wonders of **the natural world** await you beneath the dome of this classical building, which has recently been undergoing extensive renovation. This museum complex holds more than **125 million specimens**, some of which are brand-new and some of which were collected almost 200 years ago during early voyages and explorations of the world. The vast exhibition halls focus on **the Earth** and its evolution into the world in which we live today, with wondrous displays of animals, plants, fossils, rocks, minerals and cultural artifacts.

The vast, granite-faced museum building was designed in the classical Beaux-Arts style and **opened to the public in 1910**. In 1998-1999, two major structures were built within the original open courtyards; one comprises offices, labs and storage, and the other holds the huge Johnson IMAX® Theater and a large dining area under a six-story-high sky-lit atrium. Total area of the museum: more than **18 football fields**.

## GETTING STARTED...

When you arrive, it's a good idea to estimate how much time you have and **plan your visit**. If you want to see an **IMAX® movie**, buy your tickets in advance and then arrange your schedule around the show time. On the ground floor you will find previews of the main exhibitions, the food court, two Museum Stores, visitor services and a wonderful bird exhibition.

**From September through June, free tours** start at the Rotunda on weekdays at 10:30 a.m. and 1:30 p.m. and last about an hour. If you have questions, ask the knowledgeable volunteers at two information desks, one on the ground floor in the foyer at the Constitution Avenue entrance, and another on the first floor in the Rotunda. Information is also posted at the information kiosk on the ground floor. Remember that a variety of exciting programs are presented almost every day. Check out the temporary exhibition currently on view in the hall adjacent to the escalator in the Rotunda.

Escalators, elevators and three wide staircases provide passage between the ground, first and second floors.

Plan on spending 20 to 30 minutes in each of the most popular exhibitions, because you'll find intriguing new sights wherever you look.

## HUNGRY?

The **Atrium Café** has signs that guide you to the areas for burgers, pizza, soups, salad and other fare. Soft drinks are refillable. It can get crowded from noon to 2 p.m., though lines move relatively fast. The **Fossil Café** on the first floor in the Dinosaur Hall offers fresh salads, sandwiches, pastries and beverages—and one-of-a-kind tabletop exhibits. For dessert, try the Gelato Italian Ice Cream and Espresso Bar at the entrance to the Atrium Café.



## HIGHLIGHT

Learn how nocturnal animals use darkness to their advantage: use a special night-vision scope in the Mammal Hall.



## FIRST FLOOR

At the center of the **Rotunda** is a magnificent **African elephant** displayed in a setting very much like its native habitat. Dioramas and multimedia presentations provide additional information about elephants in the wild.

## WHAT'S NEW

**The Kenneth E. Behring Family Hall of Mammals:** Featuring 274 mammals in a variety of environments, from polar to desert and from dry to humid, this 25,000-square-foot exhibition tells the story of mammal evolution through adaptation to changing habitats. An array of animals in life-like settings, along with touchable fossils, tells the story of mammal evolution. This dramatic, interactive display has been designed with families and children under 12 in mind. A life-size chimpanzee sculpture sits with the audience in the Evolution Theater and mammals gather at an African savanna water hole (complete with a dramatic rainstorm that visitors can see, hear and feel). Visitors can also view the world as a jaguar hunting at night in South America, and much more!



**Left:** The Rotunda, the architectural centerpiece of the museum and home to its well-loved African elephant, is a good spot to meet up with family. **Above:** The 45.52 carat Hope Diamond is the most visited museum object in the world.

## MAMMALS MUSEUM STORE

Inside the Behring Family Hall of Mammals you'll find our new store. Take home a souvenir of your visit from our Mammals Museum Store, which is designed to represent four continents—Africa, Australia and North and South America. Choose from toys, crafts, posters, fine jewelry, apparel, books on mammals and much more.



Over 25 years, we have evolved our viewpoint about design to create extraordinary moments and opportunities for people to have experiences that change their understanding and perspective of the world they live in.

## **REICH+PETCH**

1867 Yonge Street Toronto, ON Canada M4S 1Y5  
TEL (416) 480 2020 FAX (416) 480 1881  
[www.reich-petch.com](http://www.reich-petch.com)  
[info@reich-petch.com](mailto:info@reich-petch.com)