

MUSEUM[®]



Special Awards Issue

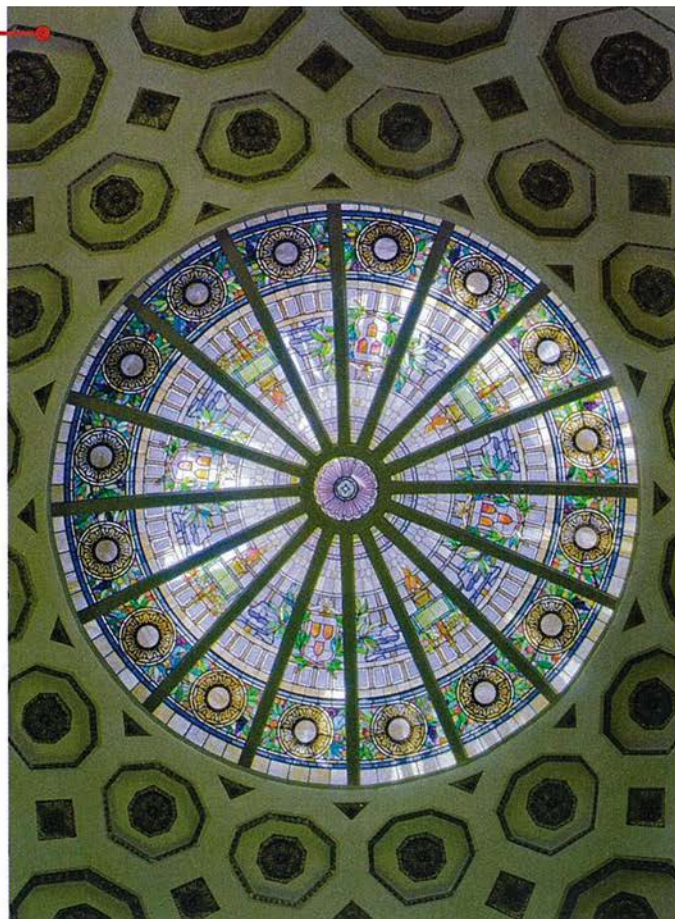
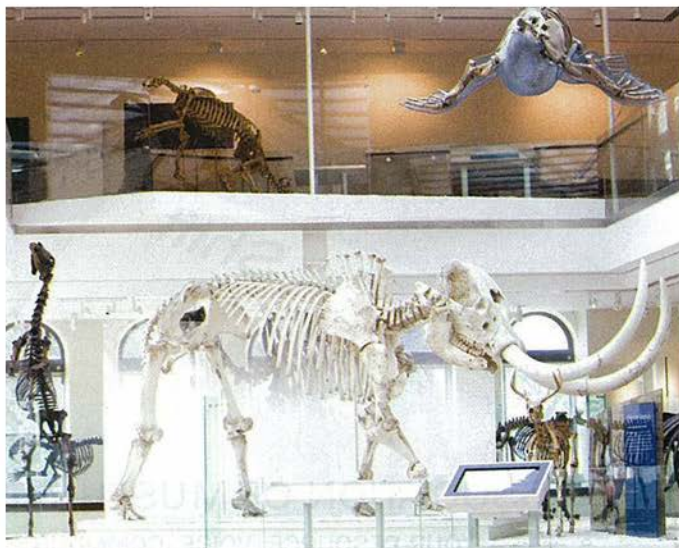
2010's Best and Brightest

Natural History Museum of Los Angeles County

Completed in August, the first phase of a \$91 million project seismically strengthened, restored and retrofitted the museum's historic 1913 building. The renovated skylit rotunda will now display rotating exhibitions, and a new "Age of Mammals" hall explores the tumultuous events of the Cenozoic Era.

Architecture: CO Architecture, Jorge de la Cal

Exhibit Design: Reich+Petch Design International





Over 25 years, we have evolved our viewpoint about design to create extraordinary moments and opportunities for people to have experiences that change their understanding and perspective of the world they live in.

REICH+PETCH

1867 Yonge Street Toronto, ON Canada M4S 1Y5
TEL (416) 480 2020 FAX (416) 480 1881
www.reich-petch.com
info@reich-petch.com